

Starting at  
**\$180,000**

Available for Immediate Delivery  
Located in High River, AB



**SAVE  
\$7,000**

# TARAN

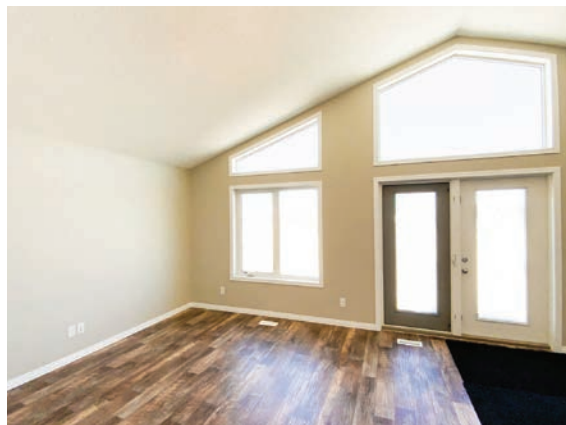
**1120 SQFT**  
**28'-0" W X 40'-0" D**

<i>Living Room</i>	16'-0" X 13'-0"
<i>Kitchen</i>	9'-0" X 11'-6"
<i>Dining</i>	10'-8" X 12'-0"
<i>Master Bedroom</i>	12'-1" X 9'-2"
<i>Bedroom #2</i>	8'-5" X 10'-8"
<i>Bedroom #3</i>	8'-5" X 10'-8"

\*All dimensions are approximate.



**Optional Wraparound Deck Available**



**Price includes all kitchen appliances.**



homes.nlc.ca | nelsonhomes@nlc.ca | (403) 601 - 2006



# TARAN

**1120 SQFT**  
**28'-0" W x 40'-0" D**

This gorgeous cottage style home is made for a view! The Taran features floor to ceiling windows and a vaulted ceiling in the living & dining areas.

The Taran is a fully self-contained ready to move home that only requires a screw pile foundation; everything you need is on one floor, including an electric water heater and a natural gas furnace.

There isn't much that beats the front porch experience during the summer months. Whether you're a chair, swing, or front steps kind of person, relaxing out on a deck is a real treat.

The Taran is the perfect home plan for a classic wraparound deck. Nelson Homes is able to add in an affordable wraparound deck package with the purchase of the Taran.



*NOTE: Artist's renderings do not reflect actual home specifications.*